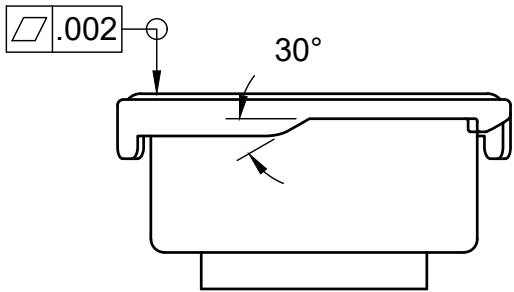
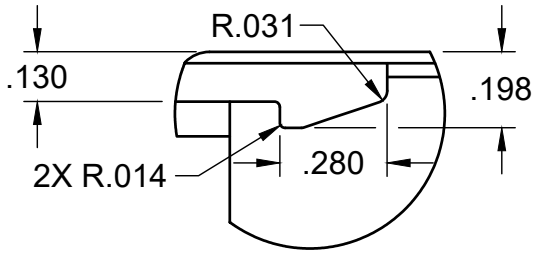
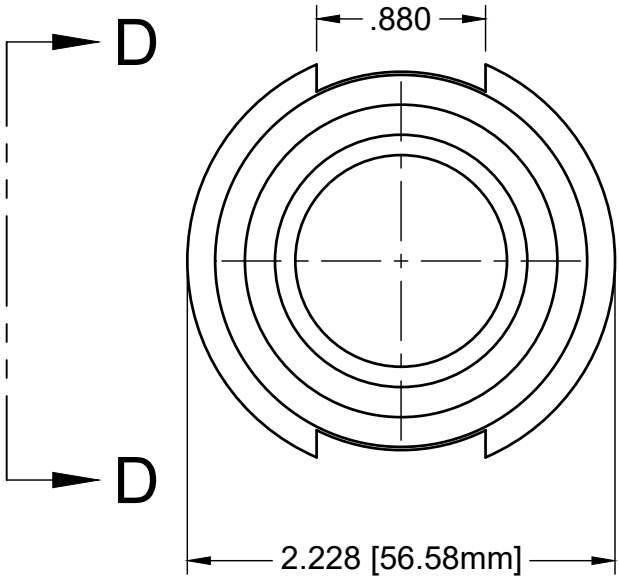


- NOTES:
- 1. MATERIAL: .036 ±.001 BRASS C260 ASTM B-36
 - 2. CONFORMS TO SAE J164, 12-18 PSI SMALL FILLER NECK

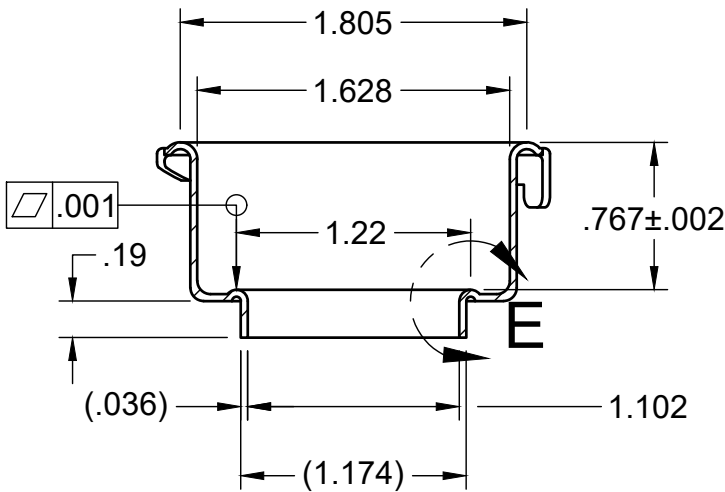
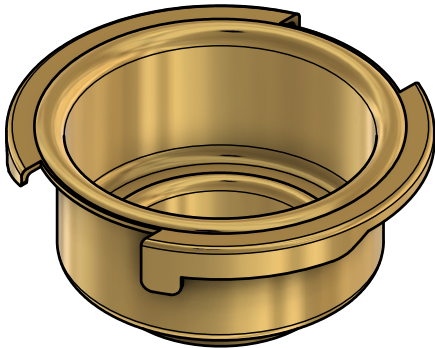
REVISION HISTORY		
REV	DESCRIPTION	DATE
A	REDRAWN PART	3/20/2026
B	UPDATED SEAL DIMENSIONS AND TOLERANCES	4/30/2026



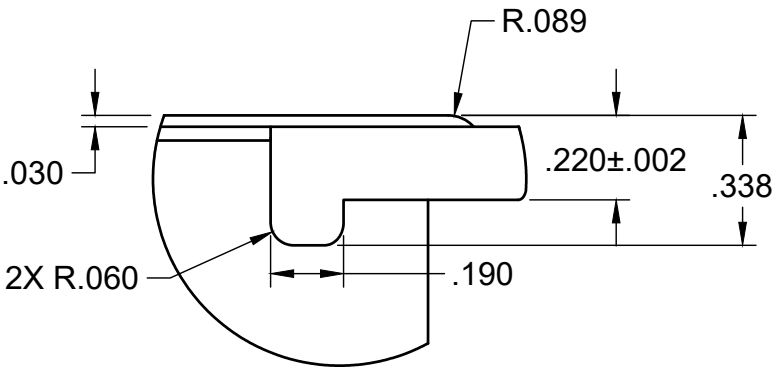
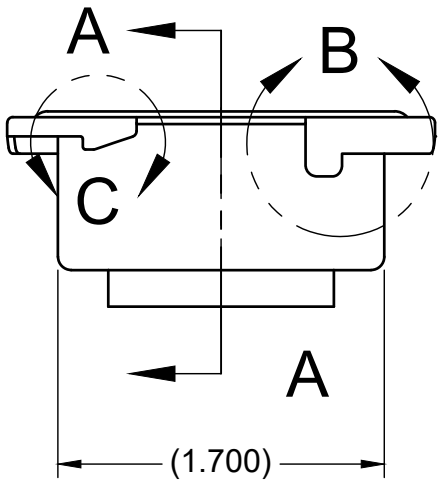
SECTION D-D
SCALE 1:1



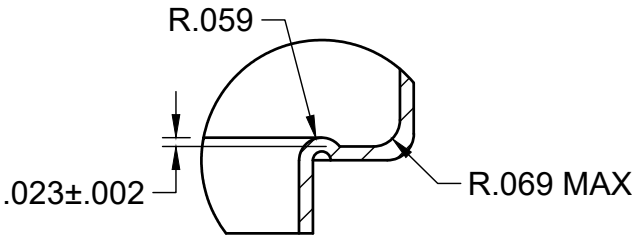
DETAIL C
SCALE 2:1



SECTION A-A
SCALE 1:1



DETAIL B
SCALE 2:1



DETAIL E
SCALE 2:1

UNLESS OTHERWISE SPECIFIED THE FOLLOWING SHALL APPLY 0.0 ±0.1 0.00 ±0.01 0.000 ... ±0.005 0° ±1°			
	Description 205 Brass Shell		
DIMENSIONS IN INCHES	SIZE	Part Number	REV
APPROVED Sant Vangavolu 3/20/2026	B	205-BR	B
DRAWN Sant Vangavolu 3/20/2026	SCALE 2:1	WEIGHT 40.44 g	SHEET 1/1